

A dashed blue rectangular border surrounds the central text. In the top right corner, there is a stylized illustration of a blue and purple fountain pen. In the bottom left corner, there is a green ruler and a grey set square. In the bottom right corner, there is a yellow pencil with a red eraser and a grey notepad with a pink tab.

## 第三课时    Section B(1a—1d)



## 一、单项选择。

- ( ) 1. (芜湖九中月考卷) You can only turn left when you see the \_\_\_\_\_ sign.



A



B



C



D

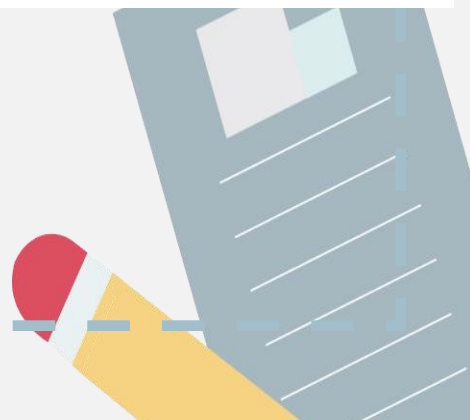
- ( ) 2. Just go along and turn \_\_\_\_\_, the school is \_\_\_\_\_.  
A. left; on the right                      B. the left; on the left  
C. to left; left                              D. to right; on right
- ( ) 3. Turn left \_\_\_\_\_ the first crossing and the park is on your left.  
A. at                      B. to                      C. in                      D. on
- ( ) 4. Go down this street, then turn right at the second turning. (词语替换)  
A. Go through    B. Come out    C. Take down    D. Walk along
- ( ) 5. Mike is short. I'm tall. So I'm \_\_\_\_\_ Mike.  
A. in front of    B. in the front of    C. behind    D. between



## 二、用方框中所给词的适当形式填空。

*cross, be, town, behind, dictionary*

1. There \_\_\_\_\_ a dog and two boys under the tree.
2. Take the first \_\_\_\_\_ on the right.
3. —Where is Jane?  
—Well, she is right \_\_\_\_\_ you.
4. There are two \_\_\_\_\_ in the bookcase.
5. My grandparents live in a small \_\_\_\_\_.





### 三、按要求完成下列各题。

1. There are some books on the desk. (改为一般疑问句)

\_\_\_\_\_ books on the desk?

2. I'm on Tom's left. (改为同义句)

Tom is on \_\_\_\_\_.

3. A year has 365 days. (改为同义句)

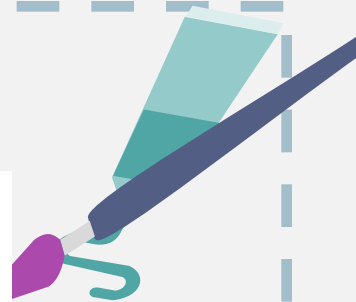
\_\_\_\_\_ 365 days in a year.

4. Across from the park is an old hotel. (对画线部分提问)

\_\_\_\_\_ across from the park?

5. You can get to the city library by No. 1 bus. (对画线部分提问)

\_\_\_\_\_ get to the city library?







#### 四、根据汉语意思完成句子。

1. 沿着这条街走,你就会看到它在你的右边。

\_\_\_\_\_ this street, and you'll find it \_\_\_\_\_ your right.

2. 当你看到邮局时,请向左转。

When you see the post office, please \_\_\_\_\_.

3. 打扰了,请问在这附近有邮局吗?

\_\_\_\_\_, is there a post office \_\_\_\_\_?

4. 图书馆就在你的右边。

The library is \_\_\_\_\_.

5. 在第二个十字路口向左拐。

Turn left \_\_\_\_\_.

